

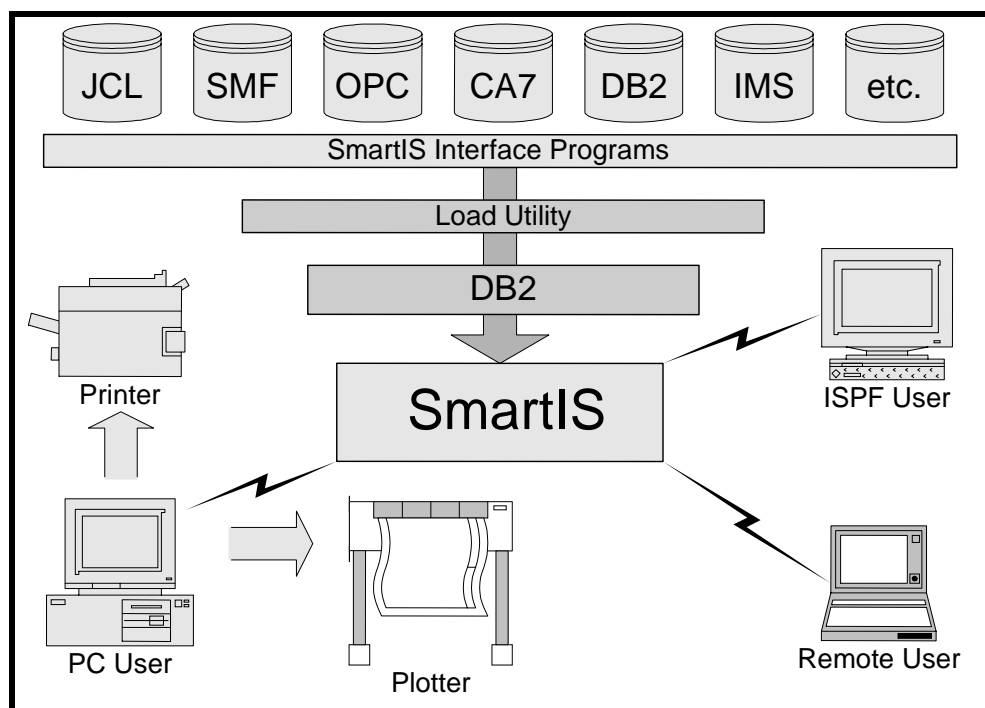
## What is SmartIS?

SmartIS is a **Smart Information System** designed for today's mainframe computing centers. SmartIS automatically collects and correlates data from the areas of:

- Operations Management
- Production Planning
- Application Development
- Quality Assurance and Integration
- Disaster Recovery and Conversions
- End-user departments

Once collected into the DB2 repository, authorized users may issue pre-defined queries to cross-reference, verify and analyze data and produce graphs of all data structures. Queries can be tailored to provide specific views and formats. Queries can also be scheduled to run in batch mode.

SmartIS allows comprehensive evaluations of different data, (e.g. CA-7, OPC, CONTROL-M, ZEKE, CA-JobTrac, CA-Scheduler, DB2, JCL, SMF, IMS, CA-1, RMM, COBOL, PL/1, report writers, etc.), all using a common dialog and user interface.



Authorized users can create their own queries, without the requirement of programming or database knowledge. Traditional tools such as SPUFI or QMF become unnecessary.

Utilizing the uniform interface, there's no need to use different access methods and languages to jump from data source to data source. Users can navigate freely from screen to screen.

SmartIS is also an **open system**, which also allows for the integration of "custom" data sources. So site-specific tailor-made solutions can be fully utilized.

Unlike "other products", which typically only run on OS/2, SmartIS was designed to run across all 32-bit Windows platforms.

## Who should use SmartIS?

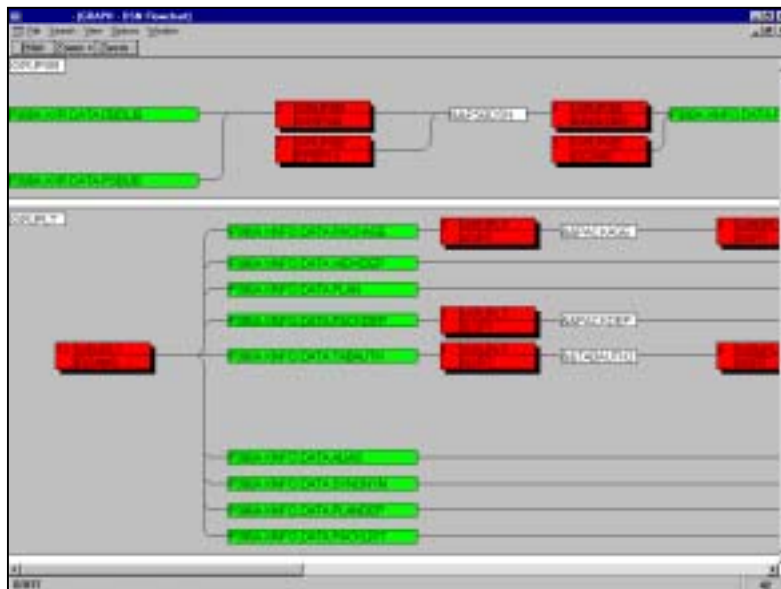
Anyone who needs to query data, but especially:

- Production Control
- Production Scheduling
- Operations
- Technical Services
- Help Desks

- Development
- Integration Testing
- Applications
- Quality Assurance
- Conversion Teams

## Why should you use SmartIS?

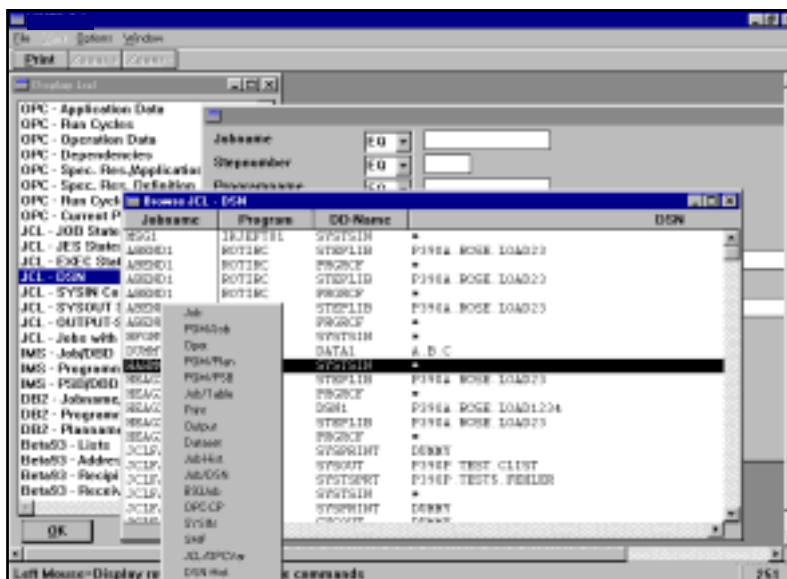
A graphical view of your data says more than a thousand words!



Actually being able to *visualize* your Production on a screen can help you find solutions and answers much faster than wading through lists and reports.

But some people really like lists...

So wouldn't it be great to "jump" from one list of results to another, without having to exit the program and use a new dialog?



SmartIS won't stop you from doing that! In fact, it's easy.

Submit queries such as:

- My Job "Sales" failed, how can I re-start it?
- Show me all datasets that use payroll applications because we need to make some tax code changes.
- What is going to be affected in the rest of today's schedule?
- How many jobs ran last week? How many of those abended? Of those jobs which abended, which ones used the DB2 table NNN?
- Show me a graph of my SMF data as I need to see all anomalies during the past month.
- Which DB2 tables are processed by which jobs and programs?
- When was dataset A.B.C. last closed successfully?
- What datasets were in use last night between 1:30 and 3:43 a.m.?
- What jobs (JCL members) have programs with suffix \*TABC?
- What tapes do we need for the disaster recovery test?

## How does SmartIS work?

SmartIS consists of two main components:

- ISPF Interface for the Host
- PC Client

### The ISPF Interface

The ISPF dialog provides (customizable) selection criteria in pre-defined panels. The results are displayed in tables and lists. The advantages here:

- No need for any user-specific configuration
- Minimal training for users
- Complete integration of all ISPF tools (Listcat, Browse,...)
- Easy to use. Only three steps to get to the result

**← 1 – Select Panel**

```
----- SmartIS - Startpanel -----
Command

0 - Options
1 - JCL - JOB Statements
2 - JCL - JES
3 - JCL - EXEC
4 - JCL - DSN
5 - History -
```

**2 – Specify Search Criteria →**

```
----- Search Arguments JCL JOB Statements -----
Command ==>
Top   : BATCH Build JCL  END Leave  OPT Options

Jobname      ===> EQ #DB2*_____
Account      ===> EQ _____
Programmers Name ===> EQ _____
```

**↑ 3 – Get Results!**

```
----- History - Job Run Times -----
Command ==>

Top   : Legend  SAVE  SORT  Find  STAT  LIBS  BATCH  Arrange  EXit
Bottom: ? List all Line Commands S Select  A Appl.  R Run Cycles
Browse Job  JT Job/Table  Q PGM/PSB  CP OPC-CP  SI SYSIN ...

Application ID  ON  Jobname  Job Start Time  Job End Time
.. ACW500000A  003 #DB2IMS  19.01.1999,20:00  19.01.1999,20:00
.. ACW500000A  003 #DB2IMS  18.01.1999,20:00  18.01.1999,20:00
.. ACW500000A  004 #DB2IMS  19.01.1999,20:00  19.01.1999,20:06
.. ACW500000A  004 #DB2IMS  18.01.1999,20:00  18.01.1999,20:02
```

## The PC Client

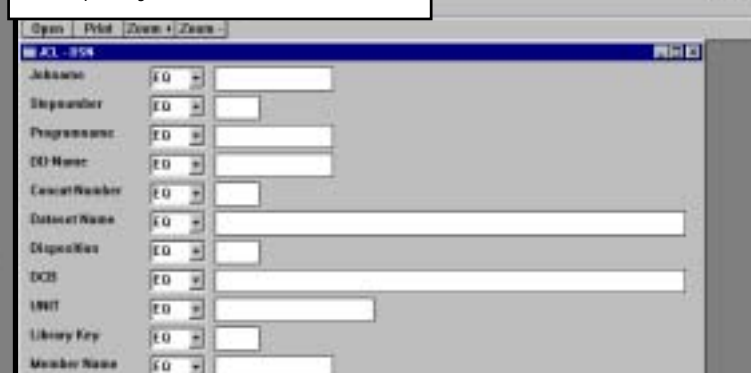
Using the SmartIS PC Client, you can access all information directly from your PC.

- Simple access to SmartIS from every PC
- No need for TSO sessions
- Multiple windows, printing, zooming
- Works with all 32-bit Windows systems
- TCP/IP or APPC Client/Server architecture
- Easy to learn and use

1 – Select Panel



2 – Specify Search Criteria



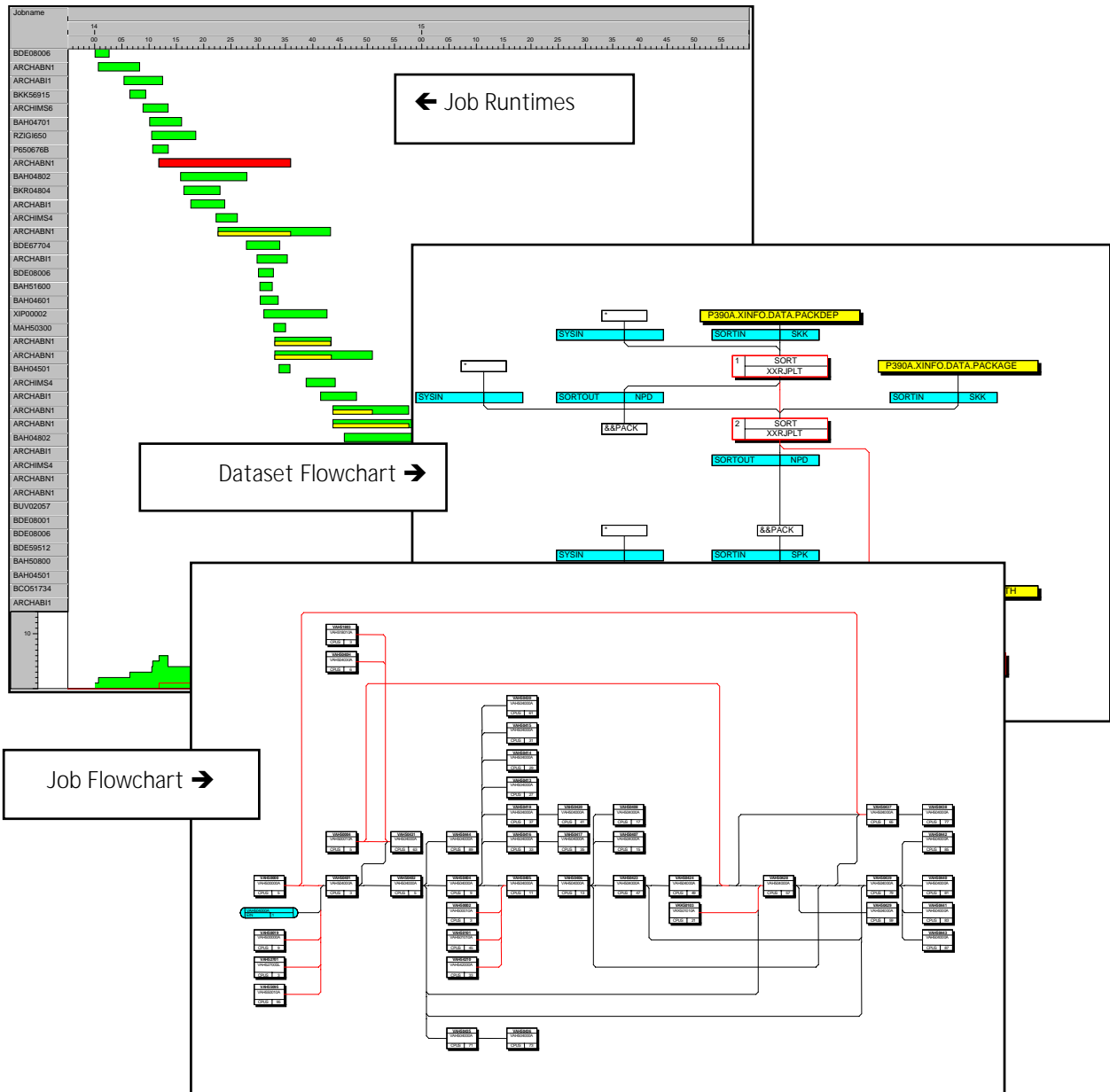
3 – Get Results

Jobsname	Start Time	DSN	Dis...	Sys	End Time
SOORULAD	16.12.98,18:37:56	P358A.JOBINFO.LOAD	SEA	P390	16.12.98,18:38:21
SOORULAD	16.12.98,18:37:56	P358A.JOBINFO.DATALADSH	ODD	P390	16.12.98,18:38:21
SOORULAD	16.12.98,18:37:56	P358A.JOBINFO.DATALADSH	NCK	P390	16.12.98,18:38:21
SOORULAD	16.12.98,18:37:56	P358A.JOBINFO.DATALADRUN	ODD	P390	16.12.98,18:38:21
SOORULAD	16.12.98,18:37:56	P358A.JOBINFO.DATALADRUN	NCK	P390	16.12.98,18:38:21
SOORULAD	16.12.98,18:37:56	P358A.JOBINFO.DATALADOP	ODD	P390	16.12.98,18:38:21
SOORULAD	16.12.98,18:37:56	P358A.JOBINFO.DATALADOP	NCK	P390	16.12.98,18:38:21
SOORULAD	16.12.98,18:37:56	P358A.JOBINFO.DATALADDEP	ODD	P390	16.12.98,18:38:21
SOORULAD	16.12.98,18:37:56	P358A.JOBINFO.DATALADDEP	NCK	P390	16.12.98,18:38:21
SOORULAD	16.12.98,18:37:56	P358A.JOBINFO.DATALADCOM	ODD	P390	16.12.98,18:38:21
SOORULAD	16.12.98,18:37:56	P358A.JOBINFO.DATALADCOM	NCK	P390	16.12.98,18:38:21
SOORULAD	16.12.98,18:36:56	P358A.JOBINFO.LOAD	SEA	P390	16.12.98,18:36:14
SOORULAD	16.12.98,18:36:56	P358A.JOBINFO.DATALADSH	ODD	P390	16.12.98,18:36:14
SOORULAD	16.12.98,18:36:56	P358A.JOBINFO.DATALADSH	NCK	P390	16.12.98,18:36:14
SOORULAD	16.12.98,18:36:56	P358A.JOBINFO.DATALADRUN	ODD	P390	16.12.98,18:36:14
SOORULAD	16.12.98,18:36:56	P358A.JOBINFO.DATALADRUN	NCK	P390	16.12.98,18:36:14
SOORULAD	16.12.98,18:36:56	P358A.JOBINFO.DATALADOP	ODD	P390	16.12.98,18:36:14
SOORULAD	16.12.98,18:36:56	P358A.JOBINFO.DATALADOP	NCK	P390	16.12.98,18:36:14
SOORULAD	16.12.98,18:36:56	P358A.JOBINFO.DATALADDEP	ODD	P390	16.12.98,18:36:14
SOORULAD	16.12.98,18:36:56	P358A.JOBINFO.DATALADDEP	NCK	P390	16.12.98,18:36:14
SOORULAD	16.12.98,18:36:56	P358A.JOBINFO.DATALADCOM	ODD	P390	16.12.98,18:36:14
SOORULAD	16.12.98,18:36:56	P358A.JOBINFO.DATALADCOM	NCK	P390	16.12.98,18:36:14
SOORUDEL1	15.12.98,15:22:52	P358A.JOBINFO.DETLOADPOSTIN	SEA	P390	15.12.98,15:24:00
SOORUDEL1	15.12.98,15:22:52	P358A.JOBINFO.DETLOADPOSTOUT	SEA	P390	15.12.98,15:24:00
SOORUDEL1	15.12.98,15:22:52	P358A.JOBINFO.DETLOADPOSTJOB	SEA	P390	15.12.98,15:24:00
SOORUDEL1	15.12.98,15:22:52	P358A.JOBINFO.DETLOADPOSTJOB	SEA	P390	15.12.98,15:24:00

## What do the SmartIS Graphics look like?

Using the PC Client, SmartIS enables you to create graphics based on Job Scheduling data and JCL.

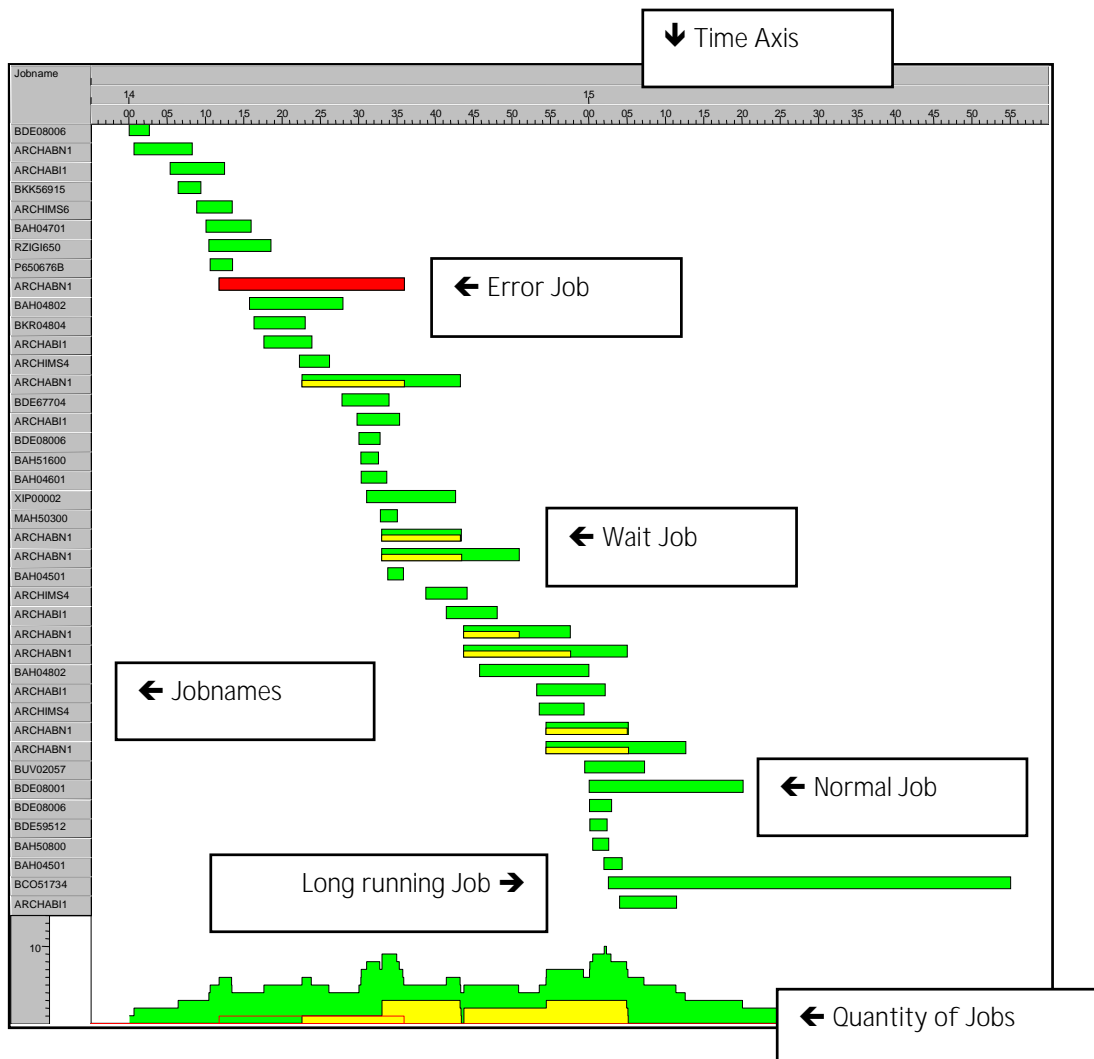
- Barcharts displaying the jobruntimes based on SMF
- Netplans displaying the jobflow based on scheduler data
- JCL and Dataset flowcharts



## The SMF Barchart

The SMF Barchart presents the job history as an easy-to-read graphic. Colors can be customized, e.g. jobs with waits or errors can be shown in contrasting colors. In one single graph, the SMF Barchart displays:

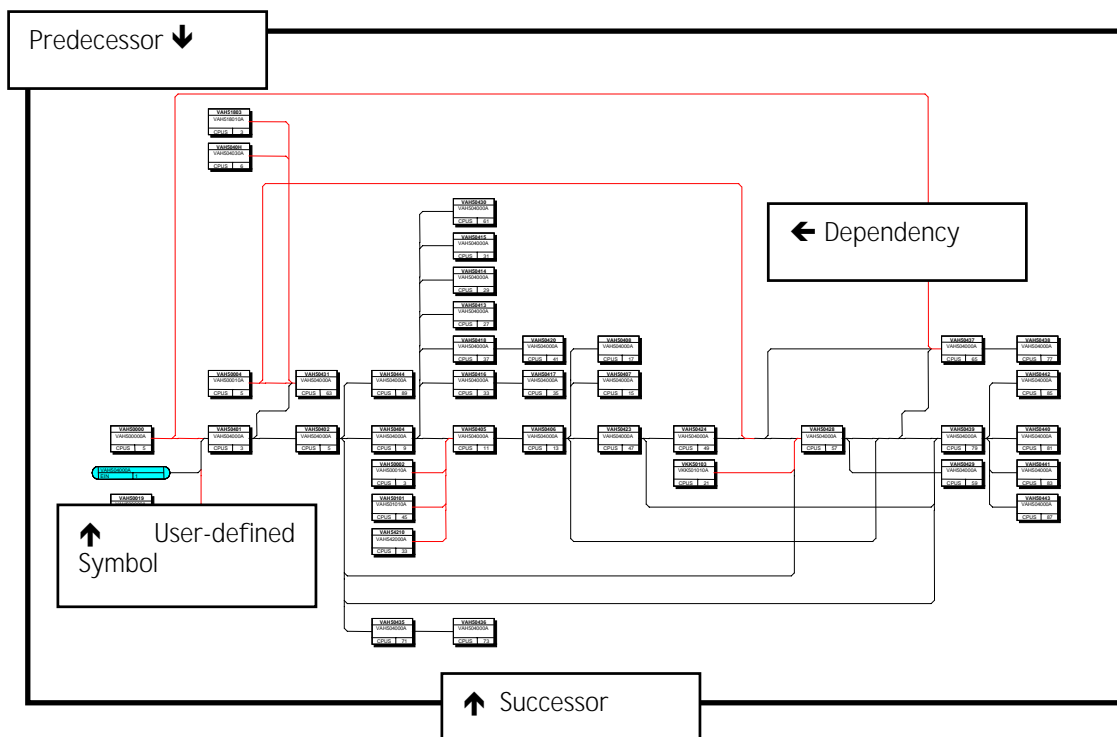
- The start and end time of every single job
- The (un)successful execution of every single job
- The wait time of every single job
- The total quantity of jobs at a certain time
- The quantity of error jobs at a certain time
- The quantity of wait jobs at a certain time



## The Job Netplan

SmartIs analyzes scheduling data (OPC, CA-7, Control-M, ZEKE or CA-JobTrac, CA-Scheduler) and displays jobs and their dependencies in a clear way. Your information is presented as an easy-to-understand netplan. Symbols can be customized for clarity and convenience. In one graph, the netplan displays:

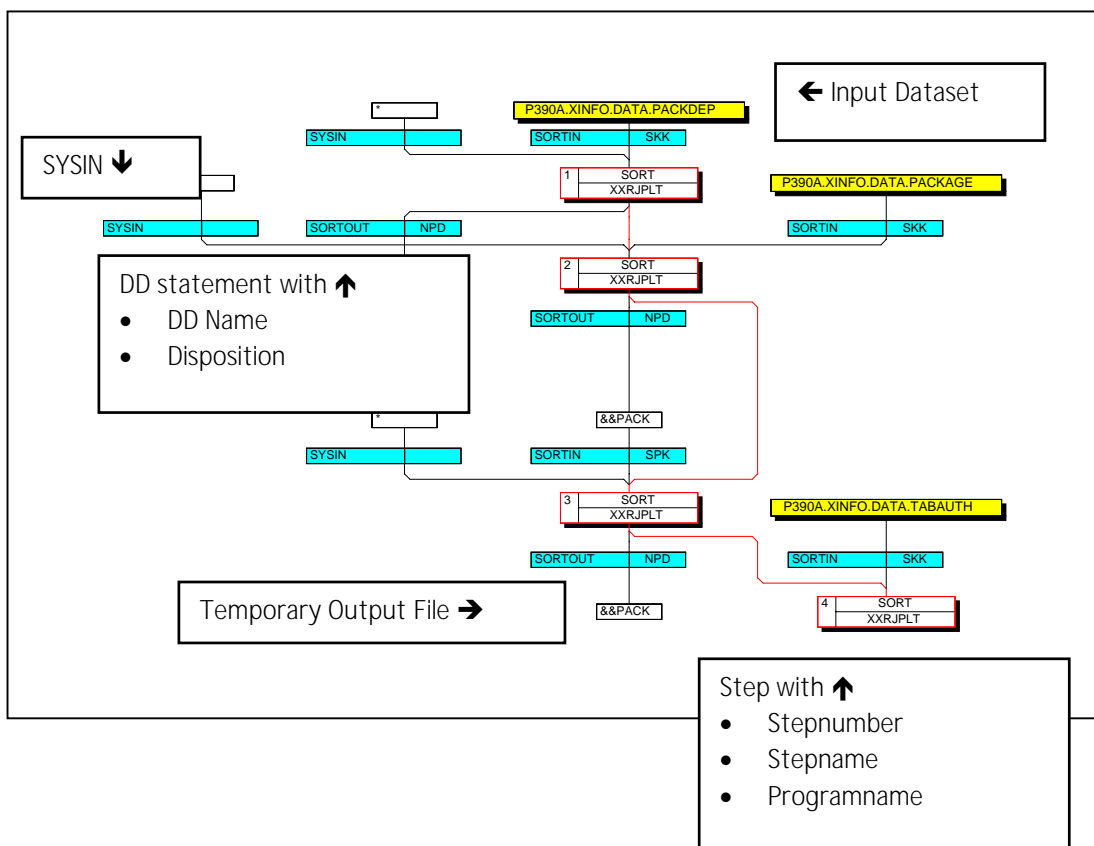
- All important data fields for every job
- All predecessors
- All successors
- All different link types (external or internal dependencies in OPC, trigger-, not-parallel or requirements in CA-7)



## The Dataset Flowchart

SmartIS analyzes JCL and displays datasets and programs in a clear way. The JCL is represented as a flowchart. All symbols and line types can be customized to suit your requirements, e.g. the background color or the font size, etc. The flowchart displays:

- all steps
- all programs
- all datasets
- all DD statements
- all disposition parameters



## The JCL Explorer

The JCL Explorer gives fast access to Job netplans and Dataset flowcharts, which can be activated using a single mouse click by the user. The Explorer displays the most important Scheduler and JCL information:

- Jobs
- Dependencies
- Programs
- Datasets

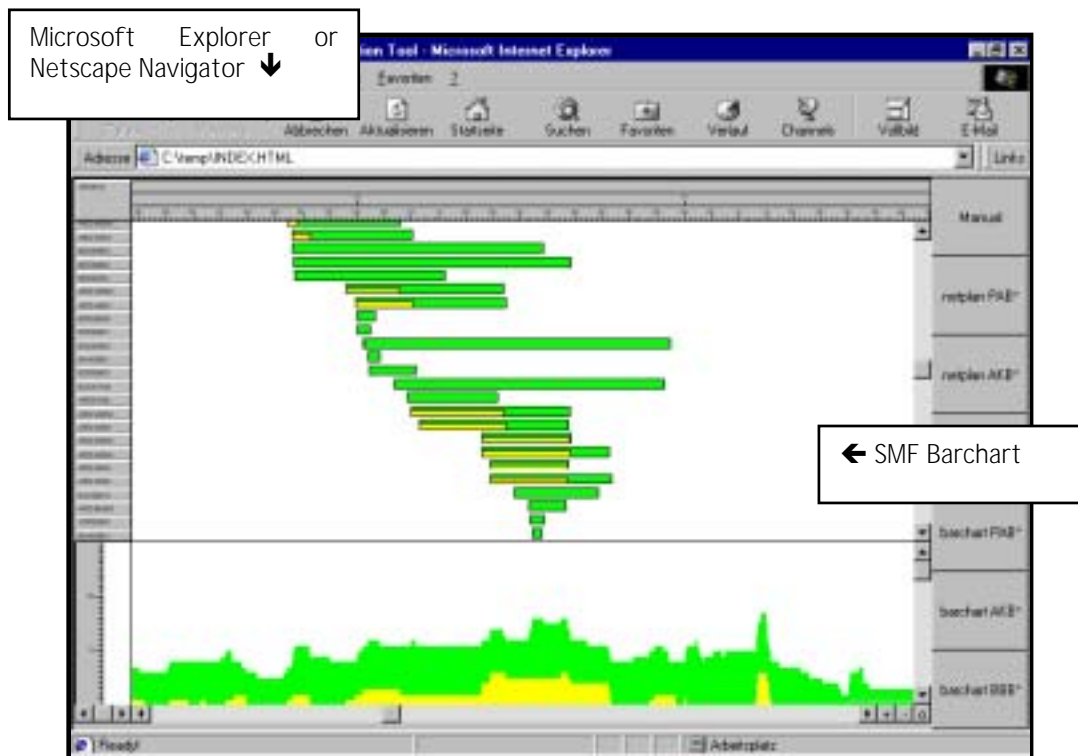
The screenshot displays the JCL Explorer interface with three main views:

- Dataset Flowchart →**: A hierarchical diagram showing the flow of datasets between jobs. The left pane lists folders like J0PLU00, J0PLU01, etc. The main area shows a network of jobs and datasets connected by lines.
- Job Netplan →**: A diagram showing the dependencies between jobs. The left pane lists jobs like J0PLU00, J0PLU01, etc. The main area shows a network of jobs connected by lines.
- JCL Tree with →**: A tree view showing the structure of the JCL. The left pane lists datasets like J0PLU00, J0PLU01, etc. The main area shows a hierarchical tree structure.

Each view is accompanied by a callout box with an arrow pointing to the corresponding area in the interface.

## The WebViewer

Using the (optional) Webviewer, you can distribute all graphics created by SmartIS via the Internet or your Intranet. Access graphics anywhere and anytime using Microsoft Explorer or Netscape Navigator.



## What can SmartIS look at?

- JCL
- SMF
- DB2, IMS, ADABAS
- TWS z/OS (OPC), CA-7, CONTROL-M, CA-JobTrac, ZEKE, CA-Scheduler, TWS distributed
- MVS catalog, VSAM statistics
- HSM backup and migrate info
- CA-1, RMM (tape management)
- Source Code (PL/1, COBOL)
- BETA93, Control-D, Easytrieve, CA-Delivery
- Create your own solutions

## What do you need to run SmartIS?

DB2 on the host  
A Telephone\*

(\*Call **1-800-327-9650** and order your free 30-day trial.)

## Features/Benefits

SmartIS is an Open System

- Integrates new data easily
- Integrates existing applications
- Installs much faster than "other products"
- Extremely efficient analysis programs
- Easy to learn
- Panels can be tailored to meet individual requirements
- Queries can be set to run in foreground or in batch
- Reports can be exported in a variety of formats (e.g. HTML, WMF, etc.)
- Workstations don't require OS/2
- No SPUFI or QMF required
- End users require no programming knowledge
- Saves time and money searching for data
- Improves Quality of data
- Improves service for data center customers