



# TWS/Audit™

The Change Control System for TWS z/OS



**TWS/Audit** is a very easy-to-use and extremely valuable interface to TWS z/OS. It is a comprehensive audit control system for TWS.

TWS/Audit tracks and captures all changes made to the TWS definition databases, (AD, WS, RD, etc.) and the Current Plan, (CP) for analysis and reporting. Once captured, these changes can easily be retrieved for analysis or reporting - using a simple, flexible dialog.

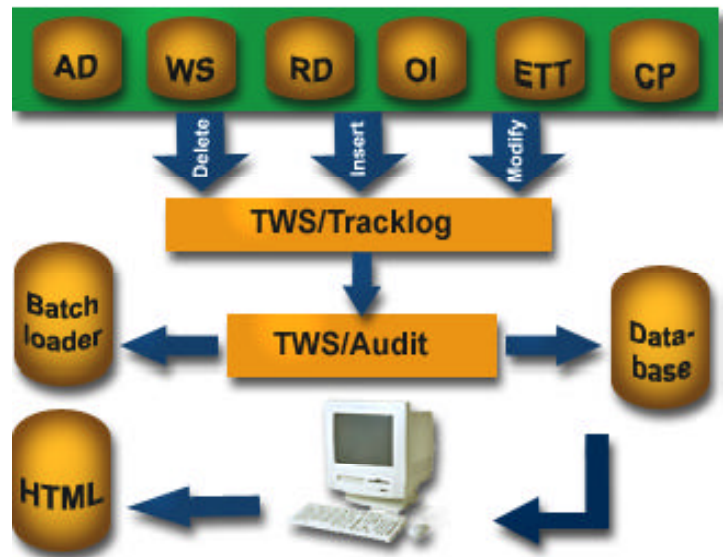
TWS/Audit tracks each version of the TWS files. The changes to the TWS definitions are logged as "revision levels". This innovative and unique approach lets users quickly and conveniently analyze all changes, making it easier to find any possible errors.

Modified, inserted and even deleted records can easily be detected. In the case of modifications, the new and the original records can be viewed side by side to make a comparison much easier.

TWS/Audit also records the changes made by each individual administrator.

At any given time, administrators can "rollback" to a previous revision level - even if the selected object was deleted!

An easy-to-use dialog program, with many search criteria, enables you to quickly find certain records.



Additionally, all information can be written to HTML files, which can then be distributed via the internet.

Add to all these features, the ability to tailor reports in order to meet site-specific standards, and this makes TWS/Audit an asset to every TWS z/OS installation.

**Make extensive changes, with the confidence that recovery is always possible.**

## Areas of Application

TWS/Audit facilitates the tighter management of TWS z/OS. Anyone, requiring information regarding TWS changes, will find benefit in this product:

- ▶ Production planning and control
- ▶ Project groups (consolidations, mergers, migrations)
- ▶ Test groups
- ▶ Quality Assurance groups

## Data Sources

TWS/Audit analyzes TWS tracklog and JT files. The modified records are stored in a separate TWS/Audit database. Track any modifications to all of the following objects:

- ▶ Applications (including Run Cycles, Operations, Special Resources, Workstations.)
- ▶ Calendars
- ▶ Periods
- ▶ Special Resource definitions
- ▶ Variable tables
- ▶ ETT
- ▶ Operator Instructions

## Versions

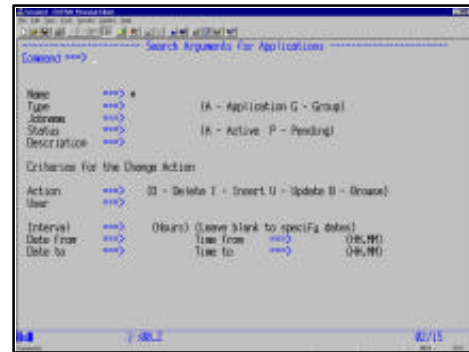
TWS/Audit keeps an unlimited number of Application versions.

- ▶ All versions can be compared with each other.
- ▶ All versions can be compared with the current version.
- ▶ TWS/Audit generates TWS Batchloader statements to quickly restore previous Application versions, to ensure complete recovery at any given time.



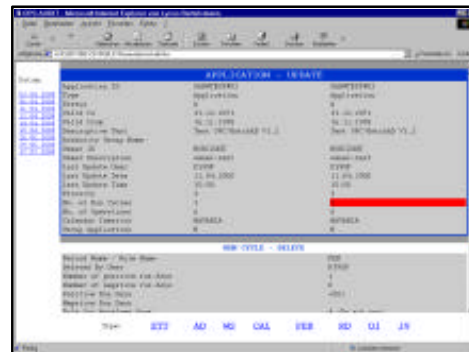
## ISPF Dialog Start Panel

The user can select which database they want to review.



## Selection

Various selection criteria are available in order to quickly locate a certain revision level.



## HTML Output

Using the HTML output, you can access audit information at any time, from anywhere - without the need for ISPF.