



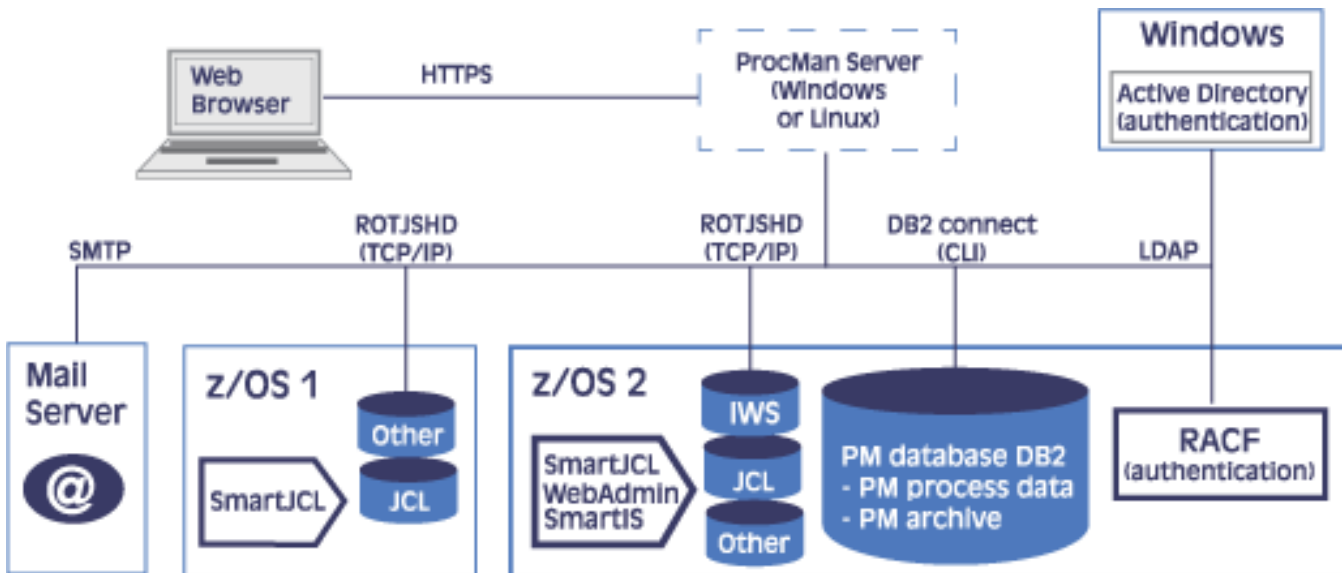
ProcMan™

The Automated Handover Process Manager for JCL & IWS



Almost every day new, or modified, batch objects are transferred to Production systems. These objects include JCL, procedures, parmlib (or control card members and scheduling objects (e.g. IWS), etc.

For these “handover” objects, every organization has its own rules and standards. The objects must be modified, verified and adapted for the requirements of each target system. Further, statutory provisions may require complete traceability and auditing as these objects are migrated to Production.



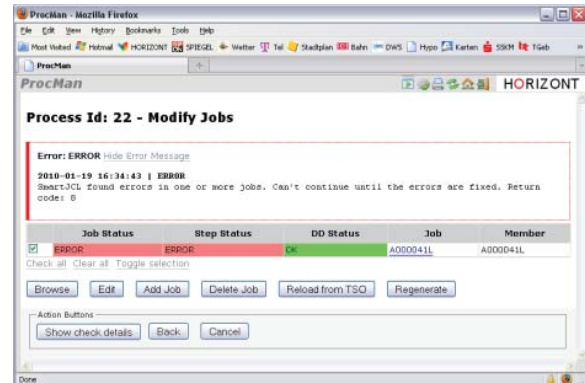
The technical environments can be diverse. Ranging from simple “Test to Production” systems on a single CPU, to complex “multiple environments” with separate infrastructures designed for parallel usages by hundreds of clients.

ProcMan™ is designed as a modular system—highly adaptable to any system architecture. Administration is simple and objects can be created, converted, transferred and audited—all using an automated method. Further, the JCL, and IWS, objects are versioned and archived in a database thus allowing for robust cross-referencing, complete reporting, and recall in a secure manner.

Areas of Application

ProcMan is an automated handover system for data centers and IT providers, where batch objects are required to be securely handled in a process-based manner.

- Automatic validation and conversion of objects according to rules.
- Role-based and process-driven selection and control of batch objects.
- Versioning and archiving of JCL and IWS objects.



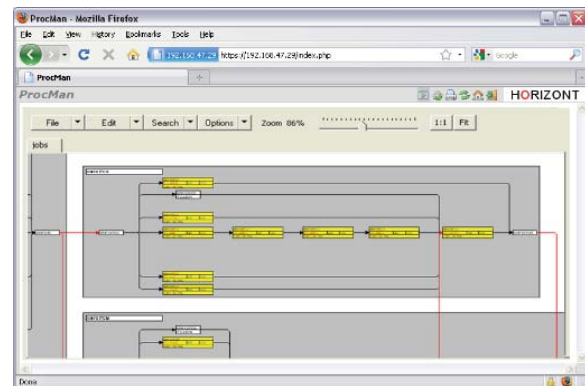
Error Prevention and Plausibility

The objects are verified immediately against the rules of the target environment.

Handover Objects

ProcMan allows for the request, creation, modification, and deletion of the following objects:

- JCL (Jobs and Procedures)
- Parmlib members (SYSIN)
- Scheduler definitions (IWS-z and IWS-ds databases)
- "Ad-hoc" request to IWS Current Plan
- File Definitions (PS, VSAM, GDG)
- Custom forms for handover of "other" system objects.



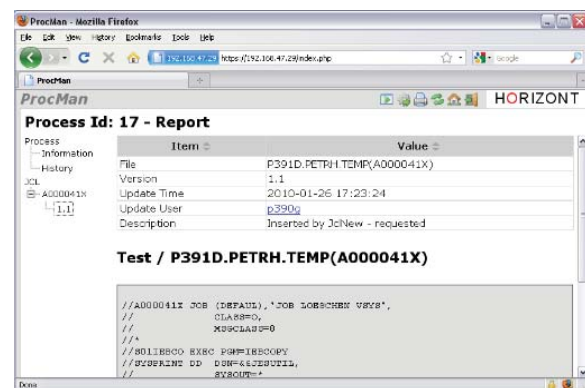
Scheduler Interface

Procman scheduler interface offers easy and secure processing of scheduler objects such as jobs, dependencies, run cycles and Ad-hoc's.

Architecture

ProcMan is a modern implementation, and is highly adaptable to any z/OS environment.

- JCL syntax built-in
- Web-based portal to all functions
- Flexible and adaptable scripting
- DB2 or Oracle database repositories.
- Server-based on Windows/Linux.
- IWS interface
- Universal interface to all ticket systems or home-made functions.



Reporting

Structured reports provide a comprehensive view of all processes to ensure that all modifications to the handover objects remain transparent and traceable.