



SEGUS

# IWS/WebAdmin ds™

The Web Interface to IWS distributed



## **Simplify IWS Administration**

There are several ways to administrate Tivoli Workload Scheduler: Using the JSC, the command line interfaces "Composer" and "Conman", or with IBM's own new Web Interface.

In addition, a number of functions are only available from the command line. Report generation, in particular, is limited to simple lists without charts or netplans. Even with the introduction of TWS 8.3 with its built in RDBMS, things didn't improved substantially.

While each of these standard interfaces has its strengths, none combines power and flexibility with easy-to-use navigation.

IWS/WebAdmin bridges the gaps between these "standard" methods by providing a web browser-based interface to IWS. The web browser provides an almost universally familiar interface and a self-explanatory navigation system.

## **Areas of Application**

IWS/WebAdmin is the program of choice for anyone responsible for Production processing:

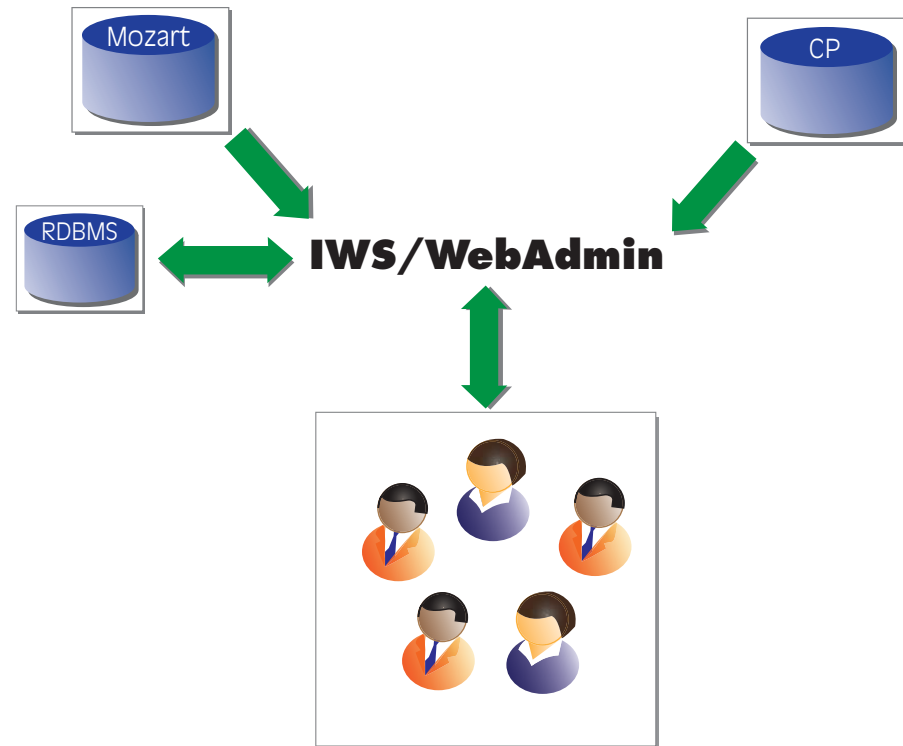
- Production planning
- Production control
- Application programmers
- Anybody requiring information from the IWS database and/or the Current Plan.

## **Simplify administration and add functionality to get more out of IWS**

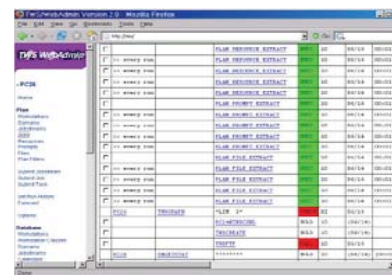
## IWS/WebAdmin distributed

### Features

- IWS Database Management: Create, modify and delete Jobs, Jobstreams, Workstations, Workstation Classes, Domains, Calendars, Resources, Prompts, Parameters, and User Definitions.
- IWS Plan Management: View and take actions on Jobs, Jobstreams, Workstations, Domains, Prompts, Resources, and File Dependencies in the Current Plan.
- Create easy-to-understand Stream and Jobnetplans to graphically display IWS definitions and the plan. Additional functions, such as, "show all successors or predecessors of a certain Job", help you through your daily work.
- View previous and future Production Days.
- Submit ad-hoc work.
- Job Notes provide a way to create and store documentation for each Production Job: Contact information, recovery procedures, and general comments.
- Reports, charts and graphs can be stored, printed, and even redirected to other Office applications.
- Track the status and deadline times of your critical Jobs with the Critical Jobs Report.
- Monitor IWS events with the built-in Event Monitor and set up email alerts with the Alert facility.
- View, search and filter IWS audit log files in an easy-to-read format.

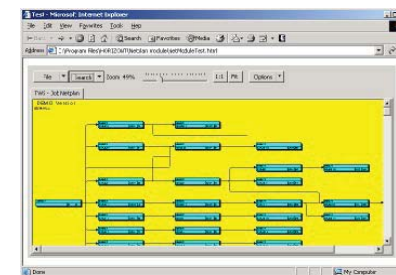


### Database & Plan Management



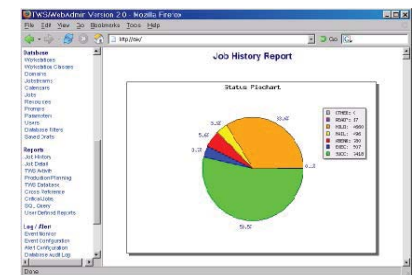
Add, modify, delete objects. Monitor and manage the IWS plan in real-time, take actions on Jobs, view Job Output.

### Netplans



Create easy to read and understand graphics for daily use. Quickly distribute to project groups and other users.

### Reporting



Use the predefined reports and charts or create your own. Run raw SQL queries to extract otherwise inaccessible information.