

## **Space AssuranceExpert for Db2 z/OS**

Real Time Space Audit and Space Management

### **Space AssuranceExpert**

Allows business expansion

Thanks to its time saving real-time monitor that automatically identifies extent problems

Eliminates system outages

By Automatically altering secondary quantities as needed and on the fly, even during a LOAD

Alters secondary space allocation

Based on DSSIZE, LARGE, and PIECESIZE

Monitors 24/7

Thus avoiding space problems for OLTP & Batch

Reports the actual database condition in real-time

Integrates into the existing Db2 space & utility management, e.g. **RTDX**

Optionally operates in a simulation mode which only performs real-time reporting

Monitors Sequences and Numeric Primary Keys, Identity Columns

Alerts on critical limits like LDSs, last PBG partition, XML DOCIDs etc.



More Transactions, New Applications, Big Data and your Business is growing  
– Fortunately Space is affordable and infinite.

BUT- take into account....

When it comes to Db2 z/OS hosting your most critical business data, adding CPU and disks doesn't help you with the limiting factors of your key database and there are several of them:

table/tablespace definition, index/indexspace definition, allocated space, overall space available, number of space extents, minimum number of partitions, sequences, Identity Columns, DOCIDs, Numeric Primary Keys.

Db2 itself doesn't come with high watermark warnings – but there is **Space AssuranceExpert** for Db2 z/OS (SAX).

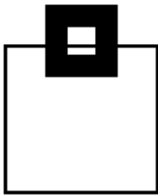
### How it works

**SAX** exploits IFCID technology (OPx) to perform real-time monitoring of all Db2 extent activity.

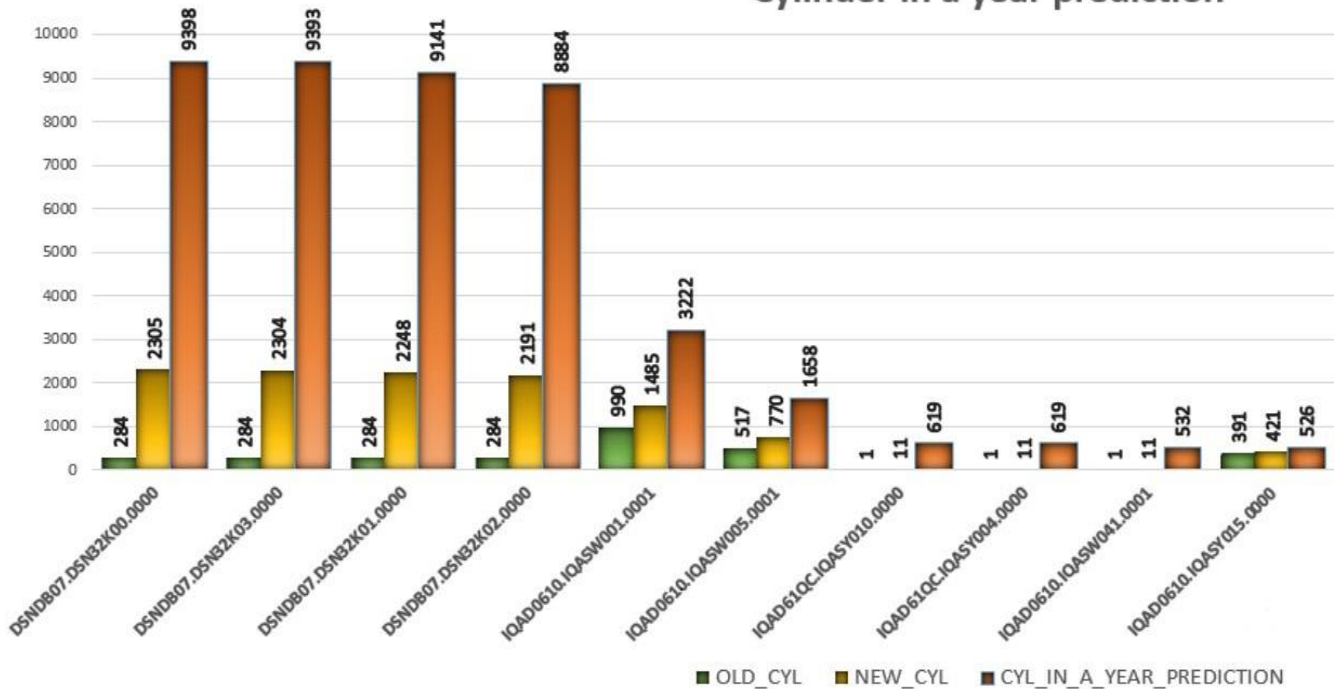
If the amount of data grows and the extent thresholds are reached, **SAX** progressively increases the secondary allocation of a Db2 VSAM cluster to your predefined quantities.

Not only does **SAX** take care of efficient DASD usage and fragmentation, the internal algorithms also guarantee that Db2 clusters will reach their maximum size before physical extent limits are reached, thus avoiding SQLCODE-904.

As well as the IFCID Technology **SAX** also processes: sequences, DOCIDs, Identity Columns, and Numeric Primary Key Checks.



### Cylinder in a year prediction



DSNDB07	DSN32K00	0000	QA1B	0001	25.11.2018	13.08.2018	104	2305	284	2021	711	19,43269231	9398	DSNDB07.DSN32K00.0000
DSNDB07	DSN32K03	0000	QA1B	0001	25.11.2018	13.08.2018	104	2304	284	2020	711	19,42307692	9393	DSNDB07.DSN32K03.0000
DSNDB07	DSN32K01	0000	QA1B	0001	25.11.2018	13.08.2018	104	2248	284	1964	691	18,88461538	9141	DSNDB07.DSN32K01.0000
DSNDB07	DSN32K02	0000	QA1B	0001	25.11.2018	13.08.2018	104	2191	284	1907	671	18,33653846	8884	DSNDB07.DSN32K02.0000
IQAD0610	IQASW001	0001	QA1B	0001	25.11.2018	13.08.2018	104	1485	990	495	50	4,759615385	3222	IQAD0610.IQASW001.0001
IQAD0610	IQASW005	0001	QA1B	0001	25.11.2018	13.08.2018	104	770	517	253	48	2,432692308	1658	IQAD0610.IQASW005.0001
IQAD61QC	IQASY010	0000	QA1B	0001	19.08.2018	13.08.2018	6	11	1	10	1000	1,666666667	619	IQAD61QC.IQASY010.0000
IQAD61QC	IQASY004	0000	QA1B	0001	19.08.2018	13.08.2018	6	11	1	10	1000	1,666666667	619	IQAD61QC.IQASY004.0000
IQAD0610	IQASW041	0001	QA1B	0001	25.11.2018	18.11.2018	7	11	1	10	1000	1,428571429	532	IQAD0610.IQASW041.0001
IQAD0610	IQASY015	0000	QA1B	0001	25.11.2018	13.08.2018	104	421	391	30	7	0,288461538	526	IQAD0610.IQASY015.0000



☐ **SAX** comes with a full package of batch and online reporting capabilities on any space related item (individual objects, group of objects, storage groups, volumes, full subsystems, ... - you name it) for accounting and trending.

ODBC based Excel integration can be used for graphically oriented reporting.

Visit our SAX pages: <https://www.seg.de/sax> or <https://www.segus.com/sax>  
 Ask for a free trial: [info@seg.de](mailto:info@seg.de)

☐ **SEGUS Inc**

14151 Park Meadow Dr. (800) 327-9650  
 Chantilly, VA 20151 [www.segus.com](http://www.segus.com)  
 USA [info@segus.com](mailto:info@segus.com)

☐ **SOFTWARE ENGINEERING GMBH**

Heinrichstraße 85 +49-211-961-49-0  
 D-40239 Dusseldorf [www.seg.de](http://www.seg.de)  
 Germany [info@seg.de](mailto:info@seg.de)